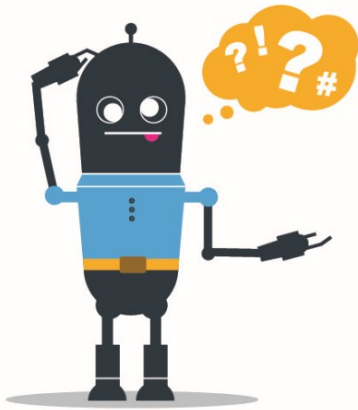




Tuesday 6th May 2020

Place value problems.



Something has gone wrong with this robots code and he has locked everyone inside the house. Can you help him work out the passcode for the door?



Write down your answer to each question in the boxes below.

- 1) The tens digit is 9 minus 6.  
The units digit is 4 doubled.
  
- 2) The tens digit is 5 more than 4.  
The units digit is 1 less than 4.
  
- 3) Multiply 3 by 3.  
That gives you the tens digit.  
The units digit is not 4 but is in the 4 times table.
  
- 4) Find the number of months in a year.  
Now take away the number of days in a week.  
That gives you the tens digit.  
Multiply 3 by 2. Add 2. Write your answer in the units place.

--	--	--	--