



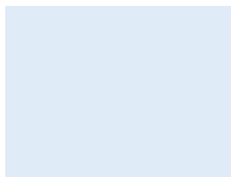
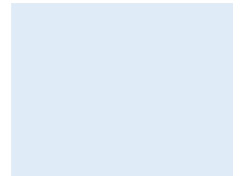
Problem solving using number and place value.

All the robots in the warehouse are numbered differently.

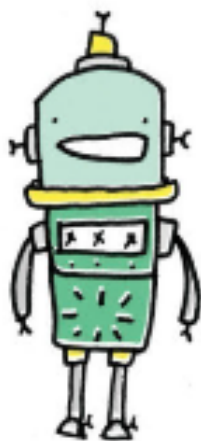
Can you work out the numbers on each robot?



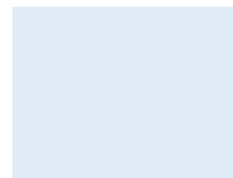
I am a 2-digit number whose digits are different. If you add my digits the answer is 9. The difference between my digits is 3. My units digit is half my tens digit.



I am a 3-digit number whose digits are all different. My Units digit is an odd number less than 6. My tens digit is 6 more than my units digit. Add my units and tens digits to get my hundreds digit.



I am 2-digit number whose digits are different. If you add my digits the answer is 6. The difference between my digits is 2. my Units digit is double my tens unit.



Pick a number and try coming up with your own clues.

Extra spicy

